

## STERIL BOTTLES IN STAINLESS STEEL



### Stainless steel container ISN 614 STERIL BOTTLES series PHARMA

- Material AISI 316L
- Glossy interior / exterior finish with continuous welds completely removed and polished.
- Upper part with TC 4 "socket with silicone gasket and stainless steel clamp closure.
- With radiused corners for correct washing
- Responding to the CGMP rules
- Supply of material certificates

Volume Lt	Section mm	Height mm	Item code
1	104	152	<b>ISN614/01</b>
2	104	227	<b>ISN614/02</b>
5	164	316	<b>ISN614/05</b>
8	215	283	<b>ISN614/08</b>
10	215	364	<b>ISN614/10</b>
15	275	360	<b>ISN614/15</b>
20	275	440	<b>ISN614/20</b>



#### Stainless steel container ISN 625 STERIL BOTTLES series PHARMA

- Material AISI 316L
- Upper, narrow-angle exhaust hopper
- On volumes 2 - 5 - 10 - 20 liters 2 stainless steel handles to facilitate handling.
- Glossy internal finish with continuous welds completely removed and polished.
- Satin external finish with weldings carried out continuously removed and satin-finished.
- Upper part with TC 4 "socket complete with Silicone gasket and stainless steel clamp closure.
- With radiused corners for correct washing
- Responding to the CGMP rules
- Supply of material certificates

Volume Lt	Section mm	Height mm	Item Code
1	130	107	<b>ISN625/01</b>
2	130	182	<b>ISN625/02</b>
5	180	255	<b>ISN625/05</b>
10	220	394	<b>ISN625/10</b>
20	303	394	<b>ISN625/20</b>
25	303	535	<b>ISN625/25</b>



### Stainless steel container with double cap ISN 417 STERIL BOTTLES series PHARMA

- Material AISI 316L
- Glossy interior / exterior finish with continuous welds completely removed and polished.
- Upper part with TC 4 "socket with silicone gasket and stainless steel clamp closure.
- Central to the TC 4 "plug two possibilities of supply:
  - o GL45 threaded male shank with cap and silicone gasket
  - o GL45 threaded female sleeve supplied without accessories
- With radiused corners for correct washing
- Responding to the CGMP rules
- Supply of material certificates

### Type with threaded male connector GL45 complete with silicone cap and gasket

Volume Lt	Section mm	Height mm	Item Code
1	104	152	<b>ISN417/01</b>
2	104	227	<b>ISN417/02</b>
5	164	316	<b>ISN417/05</b>
8	215	283	<b>ISN417/08</b>
10	215	364	<b>ISN417/10</b>
15	275	360	<b>ISN417/15</b>
20	275	440	<b>ISN417/20</b>

### Type with threaded female sleeve GL45 supplied without accessories

Volume Lt	Section mm	Height mm	Item Code
1	104	152	<b>ISN418/01</b>
2	104	227	<b>ISN418/02</b>
5	164	316	<b>ISN418/05</b>
8	215	283	<b>ISN418/08</b>
10	215	364	<b>ISN418/10</b>
15	275	360	<b>ISN614/15</b>
20	275	440	<b>ISN614/20</b>



### Stainless steel container ISN 836 SLIM STERIL BOTTLES series PHARMA

- Material AISI 316L
- Glossy interior / exterior finish with continuous welds completely removed and polished.
- Upper part with TC 2 "socket complete with Silicone gasket and stainless steel clamp closure.
- With radiused corners for correct washing
- Responding to the CGMP rules
- Supply of material certificates

Volume Lt	Section mm	Height mm	Item Code
0.25	82	103	<b>ISN836/250</b>
0.5	83	153	<b>ISN836/500</b>
1	102	183	<b>ISN836/1000</b>



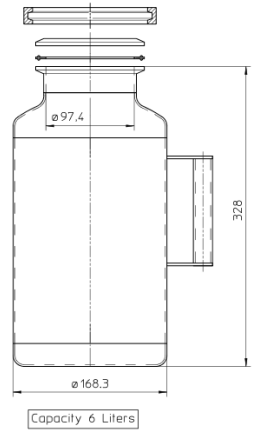
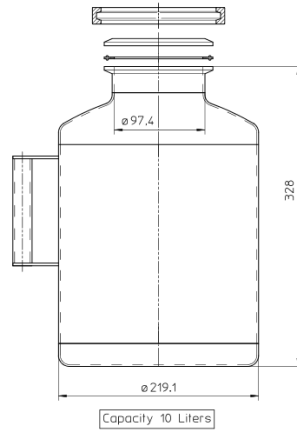
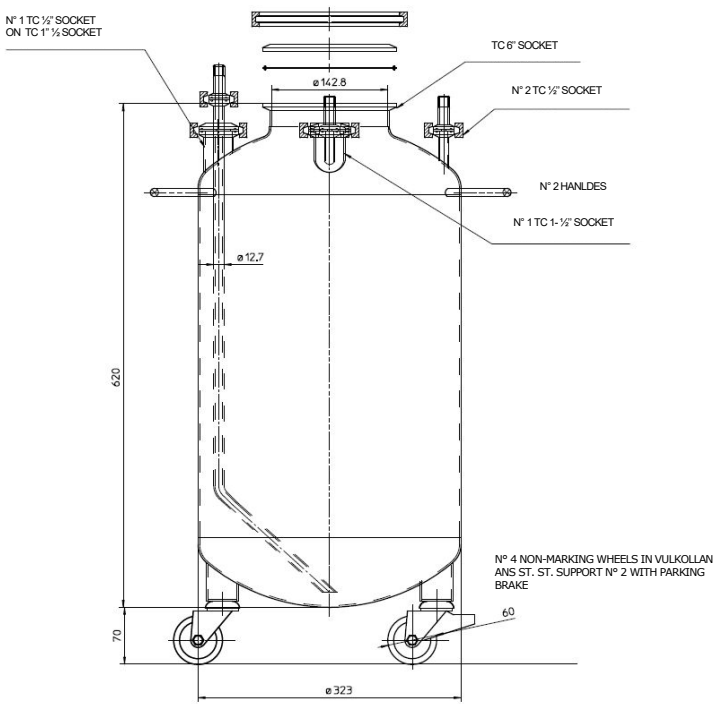
### Stainless steel container ISN 846 STERIL BOTTLES series PHARMA

- Material AISI 316L
- Glossy interior / exterior finish with continuous welds completely removed and polished.
- Upper part with screw cap complete with Silicone gasket.
- With radiused corners for correct washing.
- Responding to the CGMP rules.
- Supply of material certificates.

Volume Lt	Section mm	Height mm	Item Code
0.5	48	154	<b>ISN846/500</b>
1	48	178	<b>ISN846/1000</b>

**Special stainless steel container STERIL BOTTLES series PHARMA**

We can also design and make containers for special uses by studying with our customers types of construction to solve problems of material handling.



We also supply all the TC accessories supplied with the drums

